



Original Article



# Prognostic Significance of Tumor-infiltrating Lymphocytes and Anti-programmed Death-ligand 1 Therapy in Sinonasal Mucosal Melanoma: A 10-year Experience at a Single Institution

Jana Tarabay<sup>1</sup>, Dong Ren<sup>1</sup>, Ibe Ifegu<sup>1</sup>, Sherehan Zada<sup>1</sup>, Robert Edwards<sup>1</sup>, Jefferson Chan<sup>1</sup>, Edward C. Kuan<sup>2</sup> and Beverly Wang<sup>1\*</sup>

<sup>1</sup>Department of Pathology and Laboratory Medicine, University of California, Irvine, CA, USA; <sup>2</sup>Department of Otolaryngology-Head and Neck Surgery, University of California, Irvine, CA, USA

Received: June 18, 2023 | Revised: September 3, 2023 | Accepted: September 16, 2023 | Published online: September 25, 2023

## Abstract

**Background and objectives:** Sinonasal mucosal melanoma (SNMM) is a rare aggressive malignancy that presents with dismal outcomes and a high metastatic propensity. The prognostic factors as well as therapeutic regimens remain largely unknown due to the rarity of SNMM. This study aimed to assess the characteristics of SNMM patients associated with a better prognosis. **Methods:** We performed an observational cross-sectional study to investigate the prognostic significance of tumor-infiltrating lymphocytes (TILs) and anti-programmed death-ligand 1 (PD-L1) therapy in 12 SNMM patients who were diagnosed at our institution and treated with anti-PD-L1 from 2011 to 2021. **Results:** Of the 12 cases, five (41.7%) displayed brisk TIL activity, while seven (58.3%) had non-brisk TIL activity. The *BRAF* V600E mutation was not identified in any of the 12 cases by mutational analysis. The expression of PD-L1 was identified in 5 out of 10 SNMM cases (50%). Brisk TILs might be associated with a better prognosis compared with non-brisk TILs ( $p = 0.036$ ). **Conclusions:** Brisk TILs might serve as a potential prognostic factor in SNMM patients. Anti-PD-L1 therapy may be used as a potential therapeutic strategy for treating SNMM.

**Citation of this article:** Tarabay J, Ren D, Ifegu I, Zada S, Edwards R, Chan J, et al. Prognostic Significance of Tumor-infiltrating Lymphocytes and Anti-programmed Death-ligand 1 Therapy in Sinonasal Mucosal Melanoma: A 10-year Experience at a Single Institution. *J Clin Transl Pathol* 2023;3(3): 115–119. doi: 10.14218/JCTP.2023.00018.

## Introduction

Mucosal melanoma is an unusual type of melanoma that involves multiple mucosal surfaces throughout the human

body, including the sinonasal, oral, gastrointestinal, genitourinary, anorectal, and anogenital surfaces. In the region of the head and neck, sinonasal melanoma (SNMM) remains the most common subtype.<sup>1</sup> Because of late diagnosis at an advanced stage due to nonspecific symptoms, the five-year survival rate is no more than 30% in SNMM patients due to its high recurrence and metastatic potential.<sup>2</sup>

Although multiple therapeutic modalities have been implemented clinically, the outcomes of SNMM patients remain ominous. Importantly, the robust efficacy and unprecedented extension of patient survival following an anti-programmed death-ligand 1 (PD-L1) regimen have been demonstrated in numerous human cancer types, including non-small-cell lung cancer,<sup>3</sup> breast cancer,<sup>4,5</sup> and esophageal and gastric cancer<sup>6–8</sup> as well as in cutaneous melanoma.<sup>9–12</sup> Notably, through molecular testing, several independent studies have reported that PD-L1 is a molecular marker of mucosal melanoma, especially conjunctival melanoma.<sup>13</sup> In addition, PD-L1 expression has been demonstrated in both primary and metastatic malignant melanoma.<sup>14–16</sup> Moreover, according to multivariate analysis, PD-L1 overexpression has been revealed as an independent prognostic factor in melanoma patients.<sup>17</sup> However, the correlations between PD-L1 expression and prognosis of SNMM patients have not yet been elucidated.<sup>18</sup>

Tumor-infiltrating lymphocytes (TILs) are a type of immune cells that extravasate from the bloodstream and disseminate and colonize into the vicinity of cancer cells within the tumor microenvironment, and they predominantly consist of a diversity of lymphocytes.<sup>19</sup> The existence of TILs indicates that the immune network of the body can recognize abnormal tumor cells and mount an immune response against them. Furthermore, the critical role of TILs in immunotherapy has seized great momentum in recent years. TILs especially activate cytotoxic T cells, which can directly kill cancer cells, as well as recruit other immune cells by secreting a variety of cytokines.<sup>20</sup> In addition, TIL therapy has been demonstrated to improve the survival and outcomes in a number of human cancers,<sup>21–23</sup> including melanoma.<sup>24,25</sup> Notably, Amod and colleagues have reported that TIL therapy improved the therapeutic resistance and extended durable responses of tumor cells to anti-PD-L1 therapy by recruiting the TILs in the tumor microenvironment in anti-PD-L1 refractory patients with metastatic melanoma.<sup>26</sup> These findings support the no-

**Keywords:** Sinonasal mucosal melanoma; PD-L1 expression; Prognosis; Tumor-infiltrating lymphocytes.

**Abbreviations:** PD-L1, programmed death-ligand 1; SNMM, sinonasal mucosal melanoma; TILs, tumor-infiltrating lymphocytes.

\***Correspondence to:** Beverly Y. Wang, Department of Pathology and Laboratory Medicine, University of California, Irvine, 101 The City Drive, Orange, CA 92868, USA. ORCID: <https://orcid.org/0000-0002-8656-7360>. Tel: 714-456-6141, Fax: 714-456-5873, E-mail: [bevawang@hs.uci.edu](mailto:bevawang@hs.uci.edu)

tion that TIL therapy may be used as an adjuvant strategy with immunotherapy.

Herein, we analyzed the TIL activity in 12 SNMM patients as well as determining whether brisk TILs or non-brisk TILs are associated with a better prognosis. Furthermore, PD-L1 expression was analyzed, and whether anti-PD-L1 therapy appeared to be associated with improved survival rates in SNMM patients was assessed. Taken together, our results can be used to identify a potential favorable prognostic marker as well as treatment for SNMM.

## Methods

### Case collection

The approval of the Institutional Review Board was obtained from the University of California, Irvine Medical Center to collect demographics, presentation of disease, clinicopathological information, treatment modalities, and survival time in 12 patients with SNMM. In addition, this study conformed to the ethical guidelines of the Helsinki Declaration (as revised in 2013). Since this study was a retrospective study using tissue collected for treatment and/or diagnostic purposes, the consent of the patients was waived.

### Review and classification of PD-L1 analysis

A pathologic review of all cases, including the biopsies and surgical excisions, was conducted by three pathologists; a comprehensive histopathological assessment of staging, evaluation for TILs, and PD-L1 expression determination by immunohistochemistry were performed.

The TIL scoring system was done based on a semiquantitative method according to the Protocol from the College of American Pathologists.<sup>27</sup> PD-L1 28-8 (OPDIVO) antibody was used to measure the expression of PD-L1 using immunohistochemistry. A reference range  $\geq 1\%$  was deemed positive, and a reference range  $< 1\%$  was considered negative.

### Statistical analysis

The statistical software R studio version 4.2.1 was adopted to conduct statistical analysis. The correlation of TILs with survival time was analyzed using the Kaplan–Meier method and the log-rank test.

## Results

The clinicopathological features, surgical procedure, therapeutic response, and survival time of all patients are summarized in [Supplementary Table 1](#). Briefly, 12 patients with a median age of 70.0 years old (range: 53–96 years old) were included in this study. The mean tumor size was 3.5 cm (range: 0.8–6.3 cm), and they were previously untreated primary tumors that originated from the nasal cavity. Metastatic lesions were identified in 8/12 (67%) patients. During the course of follow-up, the recurrences and metastases were noted.

Out of the 12 patients, 7 patients presented a favorable response to the initial anti-PD-L1 therapy, and 5 patients had recurrence (did not respond to treatment). Three patients died, and eight patients had metastases during the course of follow-up. The median follow-up period was 18.1 months (mean: 22.4 months). More details regarding the therapeutic response, follow-up period, and status of recurrence and metastasis for each patient are listed in [Supplementary Table 1](#).

Five out of 12 patients exhibited brisk TILs, while 7 patients had non-brisk TILs (58.3%) ([Fig. 1](#)). The well-estab-

lished cutaneous melanoma-associated *BRAF* V600E mutation was not identified in any of the 12 cases by *BRAF* V600E melanoma mutational analysis. PD-L1 expression was further examined in 10 cases, and PD-L1 positivity (defined as  $\geq 1\%$ ) was identified in 5/10 cases (50%). Through analyzing the correlation of TILs with the prognosis of the 12 SNMM patients using Kaplan–Meier analysis, it appeared that those with brisk TILs were associated with a better prognosis compared with those with non-brisk TILs ( $p = 0.036$ ) ([Fig. 2](#)).

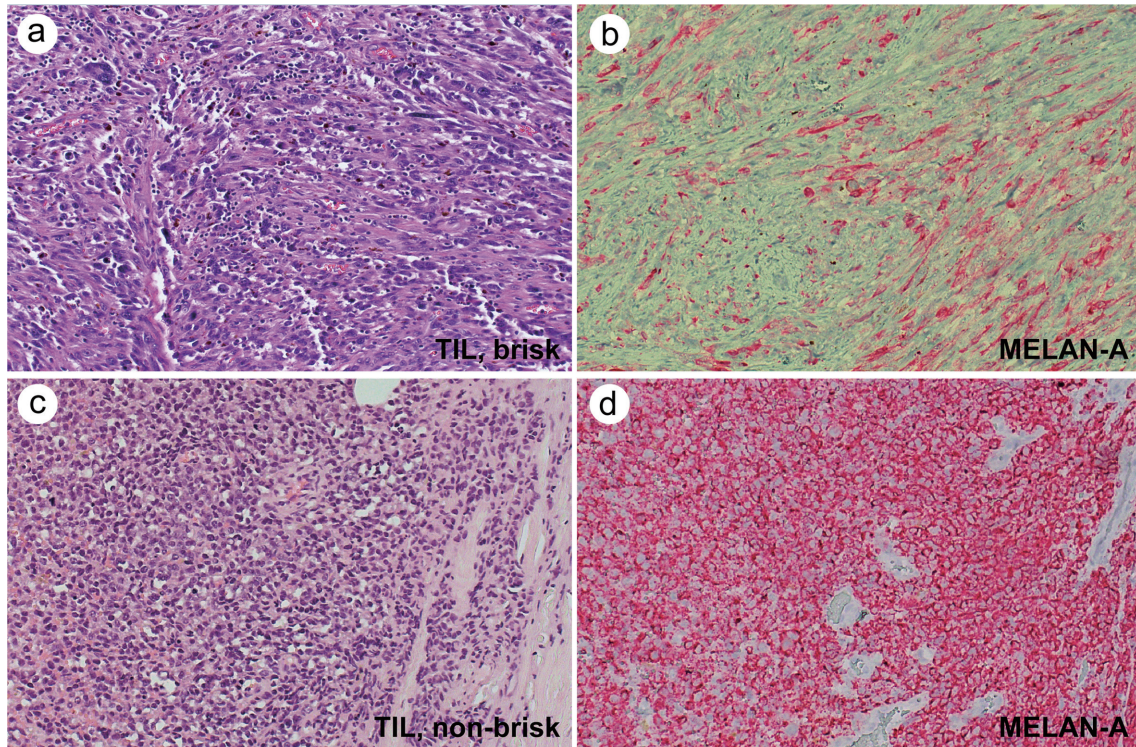
These findings imply that the presence of TILs and PD-L1 expression might represent a favorable prognostic marker in SNMM patients. Meanwhile, anti-PD-L1 therapy shows promise for improving the survival of SNMM patients with PD-L1 expression.

## Discussion

The primary findings of this study shed light on the prognostic significance of TILs in SNMM patients. Herein, we found that 41.7% of the SNMM patients presented with brisk TIL activity and that patients with brisk TILs might be associated with a better prognosis compared with those with non-brisk TILs ( $p = 0.036$ ) in the limited number (12) of patients analyzed in the current study. In addition, PD-L1 expression was identified in 5/10 SNMM patients. These findings suggest that brisk TILs may be used as a potential prognostic marker in SNMM patients.

Although the expression and clinical significance of PD-L1 has been widely demonstrated in malignant skin melanoma,<sup>14–16</sup> the prognostic significance of PD-L1 expression in mucosal melanoma is still being debated. A study including 34 mucosal melanoma patients with the *BRAF* V600E mutation has shown that PD-L1 expression was positively correlated with a poor prognosis and that the absence of tumoral PD-L1 expression predicted a favorable response to conventional treatment and a better prognosis.<sup>17</sup> In contrast, Gadiot *et al.* have longitudinally analyzed 63 patients with stage III–IV mucosal melanoma (the *BRAF* mutation status is not mentioned) and found that there was no statistical significance between PD-L1 expression and overall survival.<sup>16</sup> These findings have propelled researchers to further investigate the prognostic significance of PD-L1 expression in mucosal melanoma patients in the following work. Although PD-L1 expression does not seem to be related to prognosis, the presence of PD-L1 expression has important clinical implications for the guidance of treatment for melanoma patients. In fact, Nivolumab plus Ipilimumab combination therapy dramatically improved the overall survival in advanced mucosal melanoma patients.<sup>28</sup> In the current study, our findings demonstrate that PD-L1 expression was identified in 50% of the patients analyzed (5/10 SNMM patients). Importantly, patients with anti-PD-L1 therapy appeared to show improved survival rates, although there was no significant correlation identified due to the limited number of cases analyzed in this study. This finding supports the idea that anti-PD-L1 immunotherapy might be a promising strategy for treating SNMM patients.

Several lines of evidence indicate the prognostic significance and therapeutic potential of TILs in numerous cancers. Interestingly, it seems that the specific role of TILs depends on the tumor subtype. The presence of TILs has been demonstrated to be significantly correlated with favorable outcomes in non-small cell lung cancer,<sup>22</sup> colorectal cancer,<sup>29</sup> hepatocellular carcinoma,<sup>30</sup> and ovarian cancer including melanoma.<sup>24,25,31</sup> In breast cancer, TILs predicted a favorable response to treatment and improved the survival rates of breast cancer patients with different subtypes,<sup>32</sup> suggesting

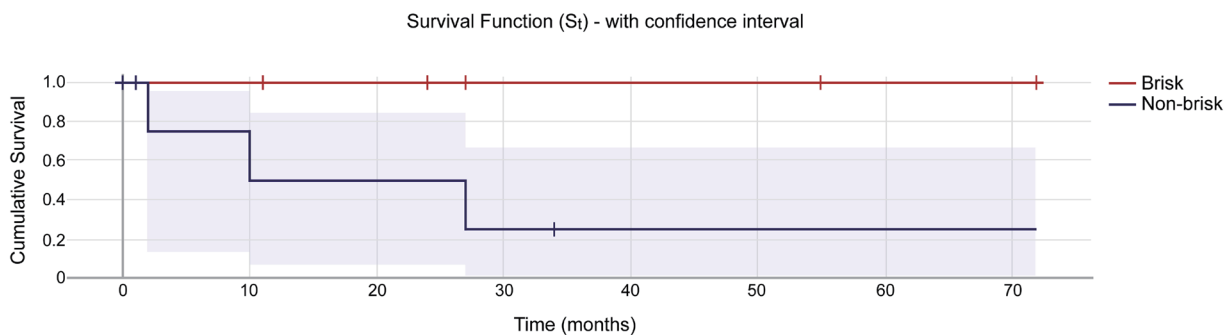


**Fig. 1. Immunohistochemistry of SNMM specimens.** (a) Representative hematoxylin and eosin staining of SNMM with brisk TILs, 40× magnification. (b) Representative immunohistochemical staining of MELAN-A in SNMM with brisk TILs, 40× magnification. (c) Representative hematoxylin and eosin staining of SNMM without brisk TILs (non-TILs), 40× magnification. (d) Representative immunohistochemical staining of MELAN-A in SNMM without brisk TILs (non-TILs), 40× magnification. SNMM, sinonasal mucosal melanoma; TILs, tumor-infiltrating lymphocytes.

that the specific role of TILs largely relies on the cancer subtype, in which the interaction between different immunological infiltrating cells and tumor cells may play a pivotal role. Consistently, our study showed that the presence of TILs was associated with better outcomes in SNMM patients, supporting the notion that TILs may play an antitumor role in SNMM. However, the specific functional role of TILs in SNMM is definitively worthy of in-depth investigations in the future.

Apart from the well-documented therapeutic efficacy of anti-PD-L1 therapy in different types of cancer,<sup>33-35</sup> including mucosal melanoma,<sup>28</sup> TIL therapy has emerged as a therapeutic strategy.<sup>21-23,36</sup> In mucosal melanoma, Rohaan *et al.* have reported that patients receiving TIL therapy presented a significantly better prognosis than those receiving chemotherapy.<sup>37</sup> In mucosal melanoma, Ledderose and colleagues

have demonstrated that high densities of CD3<sup>+</sup> and CD8<sup>+</sup> TILs are strong positive prognostic biomarkers for the survival of SNMM patients.<sup>38</sup> Furthermore, the combination of TIL therapy and anti-PD-L1 therapy significantly improved drug resistance and prognosis in mucosal melanoma patients with a *BRAF* mutation.<sup>17</sup> Importantly in lung cancer patients, TIL treatment has been demonstrated to improve the resistance of tumor cells to anti-PD-L1 therapy;<sup>39</sup> this result also has been reported in metastatic skin melanoma patients.<sup>26</sup> These findings support the idea that TIL therapy alone or in combination with anti-PD-L1 presents a favorable therapeutic avenue for patients with mucosal melanoma. In the current study, our findings revealed that both the presence of TILs and anti-PD-L1 therapy seemed to be associated with better outcomes in SNMM patients, suggesting that this com-



**Fig. 2. Analyzing the correlation of TILs with the prognosis of the 12 SNMM patients using Kaplan-Meier analysis.** The presence of brisk tumor-infiltrating lymphocytes in sinonasal mucosal melanoma patients is associated with better overall survival (Log-Rank,  $p = 0.036$ ).

ination of TILs and anti-PD-L1 therapy may be used as a treatment option for SNMM patients.

With advancements in molecular techniques, investigation of the molecular gene signature will facilitate the identification of novel driver genes in a variety of human cancers, including mucosal melanoma. A meta-analysis by Wang *et al.* has reported that *SF3B1* R625 codon mutations are unique to mucosal melanomas.<sup>40</sup> Furthermore, Mikkelsen and colleagues have explored the molecular profile of mucosal melanoma and found that apart from the *BRAF* mutation, *NRAS*, *KIT*, and *NF1* alterations were identified in non sun-exposed sites of mucosal melanomas.<sup>41</sup> These studies suggest that exploration of molecular alterations will reveal a novel pathogenesis of mucosal melanoma and be helpful in expanding the spectrum of prognostic and therapeutic targets in mucosal melanoma.

## Conclusions

Our study suggests that brisk TILs might serve as a potential prognostic factor in SNMM patients and that anti-PD-L1 therapy may be used as a potential therapeutic strategy in SNMM patients. Due to the limited number of patients included in the current study, further investigations regarding the prognostic significance of TILs and anti-PD-L1 therapy are warranted in prospective studies with a larger sample size.

## Acknowledgments

We thank the Departments of Anatomic and Clinical Pathology and Otolaryngology at the University of California, Irvine for assistance with this study. This research work reflects the support of the Chief of the Anatomic Pathology Department (Dr. Beverly Wang) to the resident-oriented research of the University of California, Irvine. It also highlights the collaborative work with the Otolaryngology Department guided by Dr. Edward Kuan.

## Funding

This work was supported by grants from the Department resident research funds (Ucimc2021\$).

## Conflict of interest

This manuscript was submitted during Dr. Beverly Wang's term from January 2022 to December 2023 serving as an Advisory Board Member of *Journal of Clinical and Translational Pathology*. The authors have no other conflicts of interest to declare.

## Author contributions

Study concept (BW, JT), data collection (JT, SZ), data analysis (JT, DR), supervision of the study (BW), drafting of the manuscript (JT, DR), review and editing of the manuscript (BW, EK). All authors revised the manuscript critically and approved the version to be published.

## Ethical statement

The approval of the Institutional Review Board was obtained from the University of California, Irvine Medical Center to collect demographics, presentation of disease, clinicopathological information, treatment modalities, and survival time in 12 patients with SNMM. In addition, this study conformed to the ethical guidelines of the Helsinki Declaration (as revised in

Tarabay, J. *et al*: Prognostic role of TILs and PD-L1 in SNMM

2013). Since this study was a retrospective study using tissue collected for treatment and/or diagnostic purposes, the consent of the patients was waived.

## Data sharing statement

Additional data are available from the corresponding author at bevawang@hs.uci.edu upon request.

## References

- [1] Temmerman D, Kilic S, Mikhael M, Butler J, Unsal AA, EURO CARE-5 Working Group. Sinonasal Mucosal Melanoma: A Population-based Comparison of the EURO CARE and SEER Registries. *Int Arch Otorhinolaryngol* 2022;26(3):e446–e452. doi:10.1055/s-0041-1740099, PMID:35846812.
- [2] Lechner M, Takahashi Y, Turri-Zanon M, Ferrari M, Liu J, Counsell N, *et al.* International Multicenter Study of Clinical Outcomes of Sinonasal Melanoma Shows Survival Benefit for Patients Treated with Immune Checkpoint Inhibitors and Potential Improvements to the Current TNM Staging System. *J Neurol Surg B Skull Base* 2022;84(4):307–319. doi:10.1055/s-0042-1750178, PMID:37405239.
- [3] Gandhi L, Rodríguez-Abreu D, Gadgeel S, Esteban E, Felip E, De Angelis F, *et al.* Pembrolizumab plus Chemotherapy in Metastatic Non-Small-Cell Lung Cancer. *N Engl J Med* 2018;378(22):2078–2092. doi:10.1056/NEJMoa1801005, PMID:29658856.
- [4] Zhang Y, Chen H, Mo H, Hu X, Gao R, Zhao Y, *et al.* Single-cell analyses reveal key immune cell subsets associated with response to PD-L1 blockade in triple-negative breast cancer. *Cancer Cell* 2021;39(12):1578–1593.e8. doi:10.1016/j.ccell.2021.09.010, PMID:34653365.
- [5] Cortes J, Cescon DW, Rugo HS, Nowecki Z, Im SA, Yusuf MM, *et al.* Pembrolizumab plus chemotherapy versus placebo plus chemotherapy for previously untreated locally recurrent inoperable or metastatic triple-negative breast cancer (KEYNOTE-355): a randomised, placebo-controlled, double-blind, phase 3 clinical trial. *Lancet* 2020;396(10265):1817–1828. doi:10.1016/S0140-6736(20)32531-9, PMID:33278935.
- [6] Janjigian YY, Shitara K, Moehler M, Garrido M, Salman P, Shen L, *et al.* First-line nivolumab plus chemotherapy versus chemotherapy alone for advanced gastric, gastro-oesophageal junction, and oesophageal adenocarcinoma (CheckMate 649): a randomised, open-label, phase 3 trial. *Lancet* 2021;398(10294):27–40. doi:10.1016/S0140-6736(21)00797-2, PMID:34102137.
- [7] Kang YK, Chen LT, Ryu MH, Oh DY, Oh SC, Chung HC, *et al.* Nivolumab plus chemotherapy versus placebo plus chemotherapy in patients with HER2-negative, untreated, unresectable advanced or recurrent gastric or gastro-oesophageal junction cancer (ATTRACTION-4): a randomised, multicentre, double-blind, placebo-controlled, phase 3 trial. *Lancet Oncol* 2022;23(2):234–247. doi:10.1016/S1473-2045(21)00692-6, PMID:35030335.
- [8] Shitara K, Van Cutsem E, Bang YJ, Fuchs C, Wyrwicz L, Lee KW, *et al.* Efficacy and Safety of Pembrolizumab or Pembrolizumab Plus Chemotherapy vs Chemotherapy Alone for Patients With First-line, Advanced Gastric Cancer: The KEYNOTE-062 Phase 3 Randomized Clinical Trial. *JAMA Oncol* 2020;6(10):1571–1580. doi:10.1001/jamaoncol.2020.3370, PMID:32880601.
- [9] Merelli B, Massi D, Cattaneo L, Mandalà M. Targeting the PD1/PD-L1 axis in melanoma: biological rationale, clinical challenges and opportunities. *Crit Rev Oncol Hematol* 2014;89(1):140–165. doi:10.1016/j.critrevonc.2013.08.002, PMID:24029602.
- [10] Eggermont AMM, Blank CU, Mandalà M, Long GV, Atkinson V, Dalle S, *et al.* Adjuvant Pembrolizumab versus Placebo in Resected Stage III Melanoma. *N Engl J Med* 2018;378(19):1789–1801. doi:10.1056/NEJMoa1802357, PMID:29658430.
- [11] Olson DJ, Eroglu Z, Brockstein B, Poklepovic AS, Bajaj M, Babu S, *et al.* Pembrolizumab Plus Ipilimumab Following Anti-PD-1/L1 Failure in Melanoma. *J Clin Oncol* 2021;39(24):2647–2655. doi:10.1200/JCO.21.00079, PMID:33945288.
- [12] Mahoney KM, Freeman GJ, McDermott DF. The Next Immune-Checkpoint Inhibitors: PD-1/PD-L1 Blockade in Melanoma. *Clin Ther* 2015;37(4):764–782. doi:10.1016/j.clinthera.2015.02.018, PMID:25823918.
- [13] Lassalle S, Nahon-Esteve S, Frouin E, Boulagnon-Rombi C, Josselin N, Cassoux N, *et al.* PD-L1 Expression in 65 Conjunctival Melanomas and Its Association with Clinical Outcome. *Int J Mol Sci* 2020;21(23):9147. doi:10.3390/ijms21239147, PMID:33266349.
- [14] Kjeldsen JW, Lorentzen CL, Martinenaite E, Ellebaek E, Donia M, Holmstrom RB, *et al.* A phase 1/2 trial of an immune-modulatory vaccine against IDO/PD-L1 in combination with nivolumab in metastatic melanoma. *Nat Med* 2021;27(12):2212–2223. doi:10.1038/s41591-021-01544-x, PMID:34887574.
- [15] Georger B, Kang HJ, Yalon-Oren M, Marshall LV, Vezina C, Pappo A, *et al.* Pembrolizumab in paediatric patients with advanced melanoma or a PD-L1-positive, advanced, relapsed, or refractory solid tumour or lymphoma (KEYNOTE-051): interim analysis of an open-label, single-arm, phase 1-2 trial. *Lancet Oncol* 2020;21(1):121–133. doi:10.1016/S1473-2045(19)30671-0, PMID:31812554.
- [16] Gadiot J, Hooijkaas AI, Kaiser AD, van Tinteren H, van Boven H, Blank C. Overall survival and PD-L1 expression in metastasized malignant melanoma. *Cancer* 2011;117(10):2192–2201. doi:10.1002/cncr.25747,

- PMID:21523733.
- [17] Massi D, Brusa D, Merelli B, Falcone C, Xue G, Carobbio A, *et al*. The status of PD-L1 and tumor-infiltrating immune cells predict resistance and poor prognosis in BRAFi-treated melanoma patients harboring mutant BRAFV600. *Ann Oncol* 2015;26(9):1980–1987. doi:10.1093/annonc/mdv255, PMID:26037795.
- [18] Liu HQ, Zou BQ, Wang SY. Expression and prognostic values of PD-1, PD-L1 and IDO-1 in sinonasal malignant mucosal melanoma. *Zhonghua Bing Li Xue Za Zhi* 2017;46(11):782–788. doi:10.3760/cma.j.issn.0529-5807.2017.11.009, PMID:29136692.
- [19] Dranoff G. Cytokines in cancer pathogenesis and cancer therapy. *Nat Rev Cancer* 2004;4(1):11–22. doi:10.1038/nrc1252, PMID:14708024.
- [20] Dougan M, Dranoff G. Immune therapy for cancer. *Annu Rev Immunol* 2009;27:83–117. doi:10.1146/annurev.immunol.021908.132544, PMID:19007331.
- [21] Wouters MCA, Nelson BH. Prognostic Significance of Tumor-Infiltrating B Cells and Plasma Cells in Human Cancer. *Clin Cancer Res* 2018;24(24):6125–6135. doi:10.1158/1078-0432.CCR-18-1481, PMID:30049748.
- [22] Bremnes RM, Busund LT, Kilvåg TL, Andersen S, Richardsen E, Paulsen EE, *et al*. The Role of Tumor-Infiltrating Lymphocytes in Development, Progression, and Prognosis of Non-Small Cell Lung Cancer. *J Thorac Oncol* 2016;11(6):789–800. doi:10.1016/j.jtho.2016.01.015, PMID:26845192.
- [23] deLeeuw RJ, Kost SE, Kakal JA, Nelson BH. The prognostic value of FoxP3+ tumor-infiltrating lymphocytes in cancer: a critical review of the literature. *Clin Cancer Res* 2012;18(11):3022–3029. doi:10.1158/1078-0432.CCR-11-3216, PMID:22510350.
- [24] Betof Warner A, Corrie PG, Hamid O. Tumor-Infiltrating Lymphocyte Therapy in Melanoma: Facts to the Future. *Clin Cancer Res* 2023;29(10):1835–1854. doi:10.1158/1078-0432.CCR-22-1922, PMID:36485001.
- [25] Rosenberg SA, Dudley ME. Adoptive cell therapy for the treatment of patients with metastatic melanoma. *Curr Opin Immunol* 2009;21(2):233–240. doi:10.1016/j.coi.2009.03.002, PMID:19304471.
- [26] Sarnaik AA, Hamid O, Khushalani NI, Lewis KD, Medina T, Kluger HM, *et al*. Lifileucel, a Tumor-Infiltrating Lymphocyte Therapy, in Metastatic Melanoma. *J Clin Oncol* 2021;39(24):2656–2666. doi:10.1200/JCO.21.00612, PMID:33979178.
- [27] Smoller BR, Gershenwald JE, Scolyer RA, Brown JA, Crowson AN, Divaris D, *et al*. Protocol for the examination of specimens from patients with melanoma of the skin. Version: Melanoma 4.0.1.0. Northfield, IL: College of American Pathologists; 2017.
- [28] Wolchok JD, Chiarion-Sileni V, Gonzalez R, Grob JJ, Rutkowski P, Lao CD, *et al*. Long-Term Outcomes With Nivolumab Plus Ipilimumab or Nivolumab Alone Versus Ipilimumab in Patients With Advanced Melanoma. *J Clin Oncol* 2022;40(2):127–137. doi:10.1200/JCO.21.02229, PMID:34818112.
- [29] Erratum to “Comprehensive Intrametastatic Immune Quantification and Major Impact of Immunoscore on Survival”. *J Natl Cancer Inst* 2018;110(4):438. doi:10.1093/jnci/djy034, PMID:29471547.
- [30] Garnelo M, Tan A, Her Z, Yeong J, Lim CJ, Chen J, *et al*. Interaction between tumour-infiltrating B cells and T cells controls the progression of hepatocellular carcinoma. *Gut* 2017;66(2):342–351. doi:10.1136/gutjnl-2015-310814, PMID:26669617.
- [31] Lundgren S, Berntsson J, Nodin B, Micke P, Jirstrom K. Prognostic impact of tumour-associated B cells and plasma cells in epithelial ovarian cancer. *J Ovarian Res* 2016;9:21. doi:10.1186/s13048-016-0232-0, PMID:27048364.
- [32] Denkert C, von Minckwitz G, Darb-Esfahani S, Lederer B, Heppner BI, Weber KE, *et al*. Tumour-infiltrating lymphocytes and prognosis in different subtypes of breast cancer: a pooled analysis of 3771 patients treated with neoadjuvant therapy. *Lancet Oncol* 2018;19(1):40–50. doi:10.1016/S1470-2045(17)30904-X, PMID:29233559.
- [33] Mariathasan S, Turley SJ, Nickles D, Castiglioni A, Yuen K, Wang Y, *et al*. TGFβ attenuates tumour response to PD-L1 blockade by contributing to exclusion of T cells. *Nature* 2018;554(7693):544–548. doi:10.1038/nature25501, PMID:29443960.
- [34] Zhu Y, Yang J, Xu D, Gao XM, Zhang Z, Hsu JL, *et al*. Disruption of tumour-associated macrophage trafficking by the osteopontin-induced colony-stimulating factor-1 signalling sensitises hepatocellular carcinoma to anti-PD-L1 blockade. *Gut* 2019;68(9):1653–1666. doi:10.1136/gutjnl-2019-318419, PMID:30902885.
- [35] Liu Y, Wang L, Song Q, Ali M, Crowe WN, Kucera GL, *et al*. Intrapleural nano-immunotherapy promotes innate and adaptive immune responses to enhance anti-PD-L1 therapy for malignant pleural effusion. *Nat Nanotechnol* 2022;17(2):206–216. doi:10.1038/s41565-021-01032-w, PMID:34916656.
- [36] Loi S, Michiels S, Adams S, Loibl S, Budczies J, Denkert C, *et al*. The journey of tumor-infiltrating lymphocytes as a biomarker in breast cancer: clinical utility in an era of checkpoint inhibition. *Ann Oncol* 2021;32(10):1236–1244. doi:10.1016/j.annonc.2021.07.007, PMID:34311075.
- [37] Rohaan MW, Borch TH, van den Berg JH, Met Ö, Kessels R, Geukes Foppen MH, *et al*. Tumor-Infiltrating Lymphocyte Therapy or Ipilimumab in Advanced Melanoma. *N Engl J Med* 2022;387(23):2113–2125. doi:10.1056/NEJMoa2210233, PMID:36477031.
- [38] Ledderose S, Schulz H, Paul T, Ledderose C, Ledderose GJ. Characterization of the tumor-infiltrating lymphocyte landscape in sinonasal mucosal melanoma. *Pathol Res Pract* 2023;241:154289. doi:10.1016/j.prp.2022.154289, PMID:36584498.
- [39] Creelan BC, Wang C, Teer JK, Toloza EM, Yao J, Kim S, *et al*. Tumor-infiltrating lymphocyte treatment for anti-PD-1-resistant metastatic lung cancer: a phase 1 trial. *Nat Med* 2021;27(8):1410–1418. doi:10.1038/s41591-021-01462-y, PMID:34385708.
- [40] Wang M, Banik I, Shain AH, Yeh I, Bastian BC. Integrated genomic analyses of acral and mucosal melanomas nominate novel driver genes. *Genome Med* 2022;14(1):65. doi:10.1186/s13073-022-01068-0, PMID:35706047.
- [41] Mikkelsen LH, Maag E, Andersen MK, Kruhoffer M, Larsen AC, Melchior LC, *et al*. The molecular profile of mucosal melanoma. *Melanoma Res* 2020;30(6):533–542. doi:10.1097/CMR.0000000000000686, PMID:33156594.